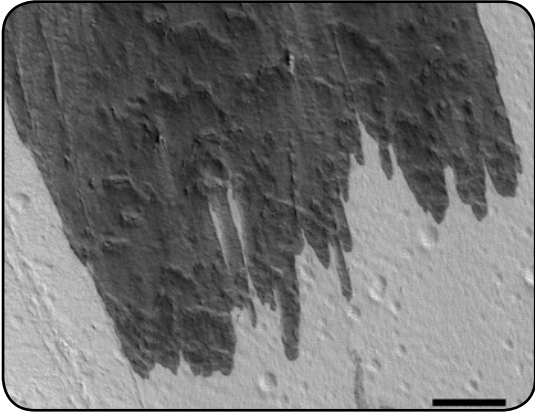


CSC/SETI Institute Colloquium Series



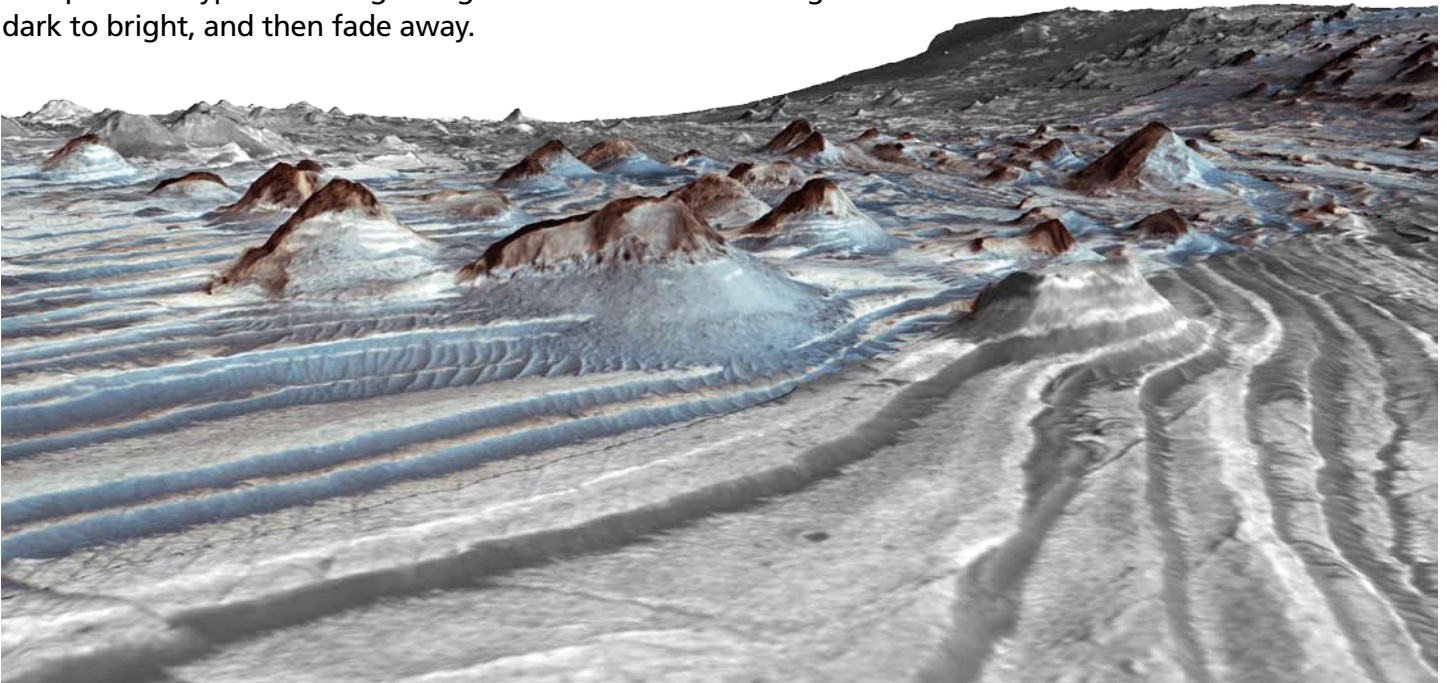
Ross Beyer

Principal Investigator, Carl Sagan Center

Wednesday, Feb. 6, 12:00 noon
The SETI Institute, Europa room

HiRISE views of Martian Strata and Slope Streaks

Ross will give a brief overview of the HiRISE instrument and then discuss how its high-resolution color imaging is contributing to an improved understanding of the geologic history of Mars as exposed in its layered outcrops. Ross will also discuss recent work regarding the enigmatic streaks observed on many slopes on Mars, and possible hypotheses regarding how these streaks change from dark to bright, and then fade away.



If you would like to receive regular e-mails about the CSC/SETI Institute colloquium series, please sign up at: <http://mailman.seti.org/listinfo/colloquium>

